



# THE MARION 2692 W/ GARAGE S

3,220 SQ. FT. | 4 BEDROOMS | 4.5 BATHS



3902 FIFLE STREET  
\$725,000

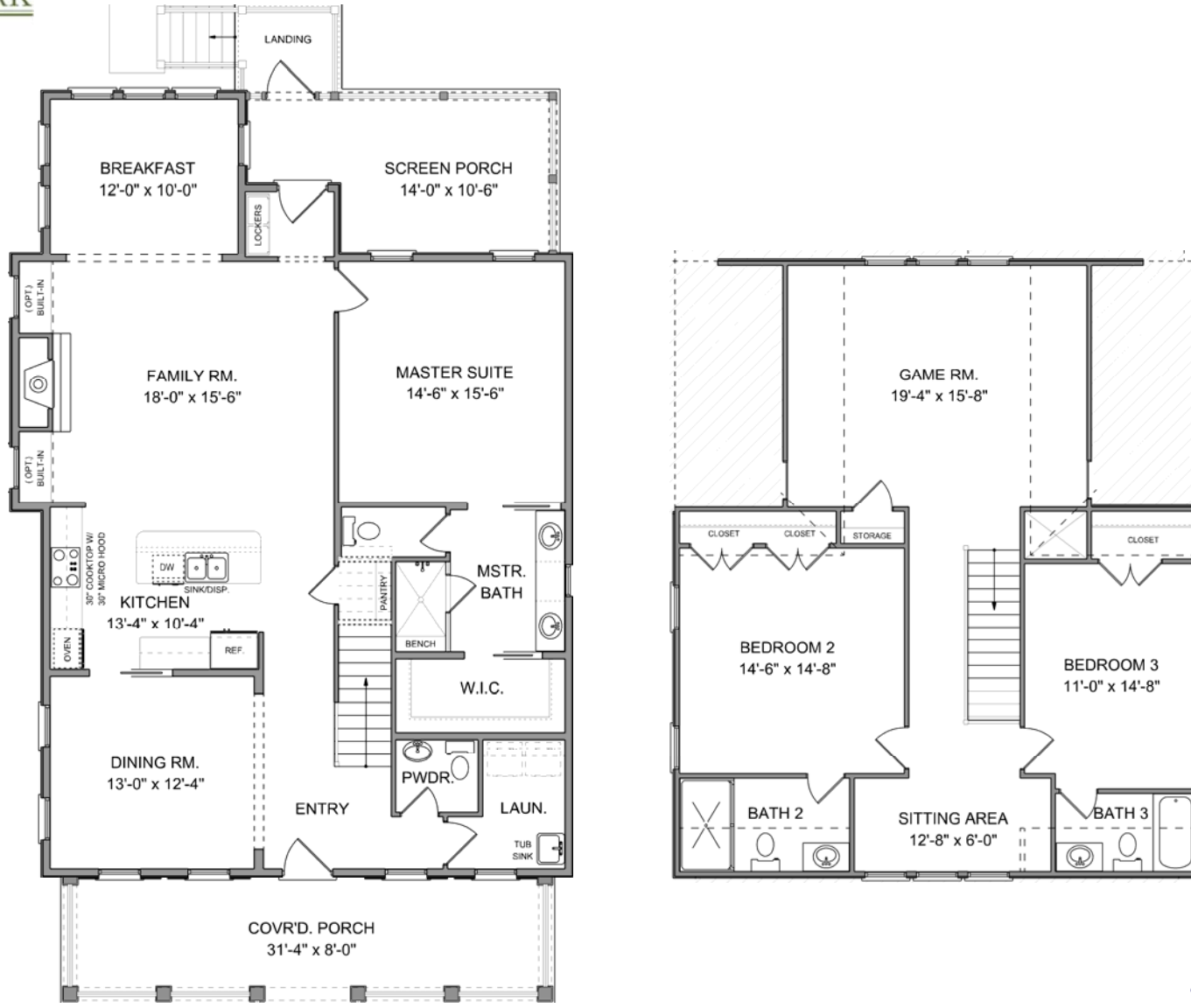


different. by design.



# THE MARION 2692

2,692 SQ. FT. | 3 BEDROOMS | 3.5 BATHS

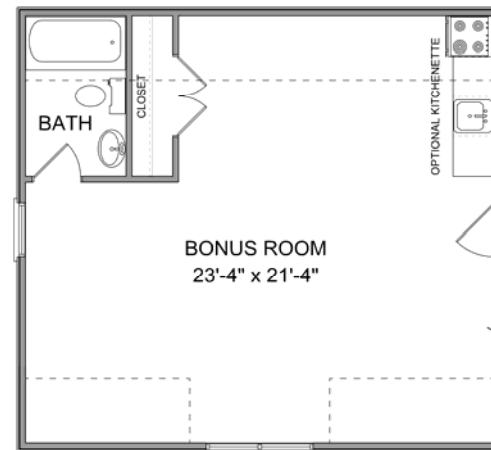
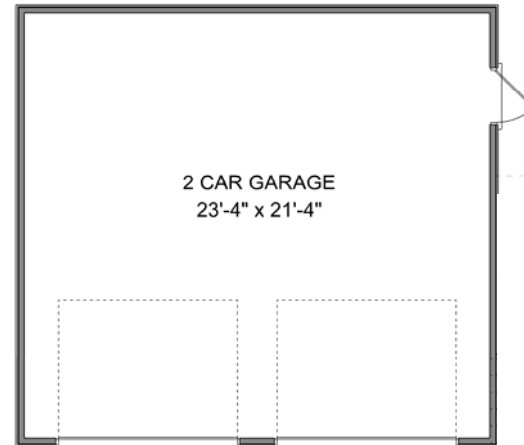


different. by design.



# GARAGE S

528 HEATED SQ. FT. UPPER LEVEL | 1 BEDROOM | 1 BATH



different. by design.